



The hickory

3 BD, 3.5 BA • 2660+ Square Feet

- Open Main Living Area with Island Kitchen
- Luxurious Primary Suite with Dual Vanities and Freestanding Tub
- Flex Room
- Two-Car Rear Entry Garage

Come Home to Holly Springs Town Center
Walk to Dining, Entertainment, Events, Outdoor Amphitheater and More

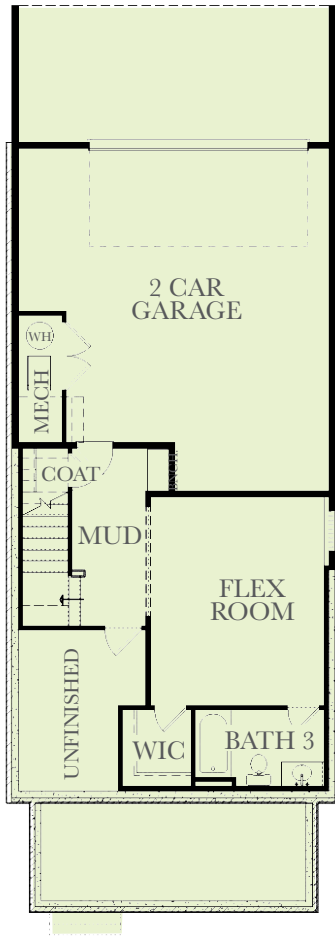


470-745-0193 | stonecresthomesga.com | hello@velocity-re.com

Find Us on Social Media @stonecresthomes



Lower Level

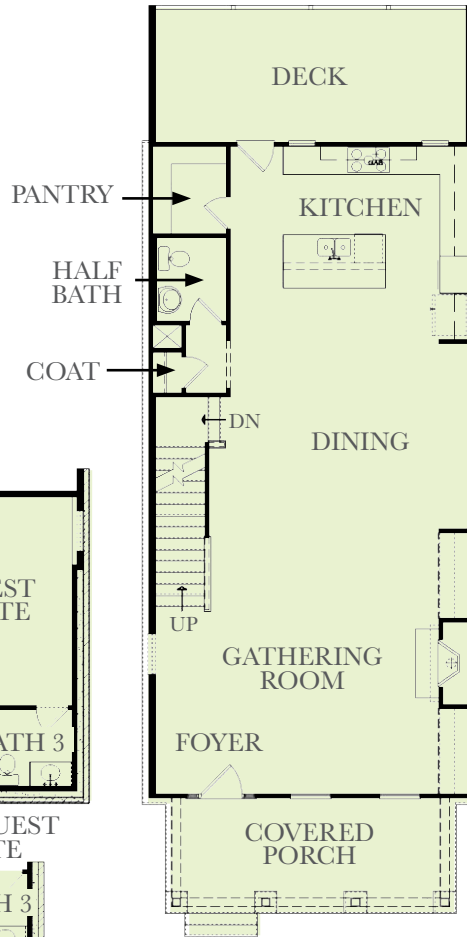


OPT. GUEST SUITE

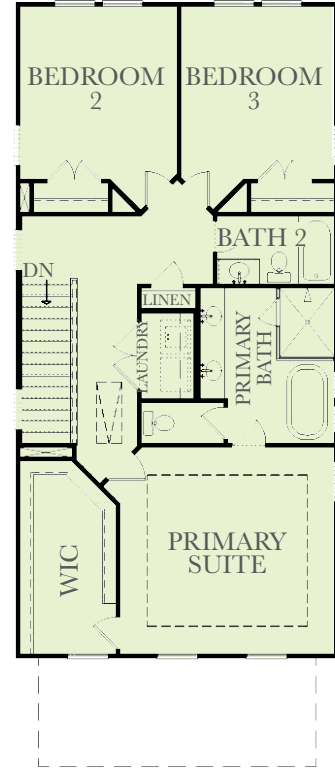


OPT. SHOWER IN BATH 3

First Floor



Second Floor



OPT. SHOWER IN BATH 2

The hickory

3 BD, 3.5 BA • 2660 Square Feet



470-745-0193 | stonecresthomesga.com

hello@velocity-re.com

Find Us on Social Media

@stonecresthomes

